

KEYPAD CONTROLS

SCROLL
UP



DIGITAL ZOOM

Press the Digital Zoom button to cycle through the digital magnification settings.

CENTER
BUTTON
(SELECT)



POLARITY

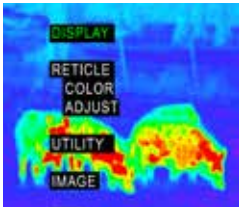
Press the Polarity button to reverse the color of the temperatures viewed in the display. (Monochrome and Alert color modes only)

SCROLL
DOWN



DISPLAY BRIGHTNESS

Press the Display Brightness button to cycle through increasing level of display brightness.



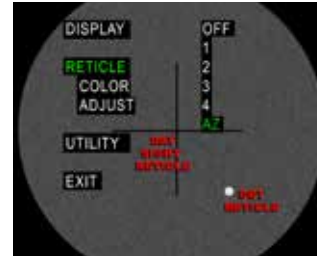
MENU OPERATION

1. Press and hold the center button for 3 seconds to enter the menu system.
2. Scroll through the menu options using the front and rear buttons.
3. Select a menu option using the center button.
4. The menu mode will time out after 7 seconds of non-use, except in Adjust sub-menu.



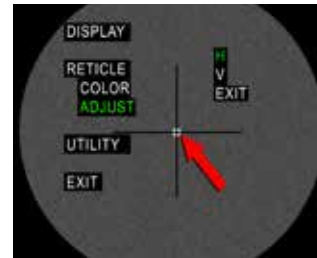
CAMERA OPERATION

1. Hold the center button until the menu appears.
2. Scroll and select IMAGE.
3. Select CAPTURE to enter the camera mode.
4. Press the center button to take a picture and advance the counter located in the upper left corner of the screen.
5. Exit the Camera mode by holding down the center button and selecting CAPTURE or powering down the unit.



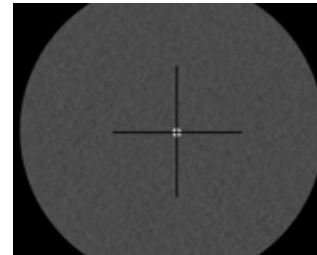
ACCU-ZOOM ALIGNMENT

Perform this one-time step to align the UTAC digital zoom to your day optic cross-hair. The thermal unit may then be removed and reattached as a true clip-on. ACCU-ZOOM alignment will remain until the weapon or day sight is changed. **US Patent Pending.**

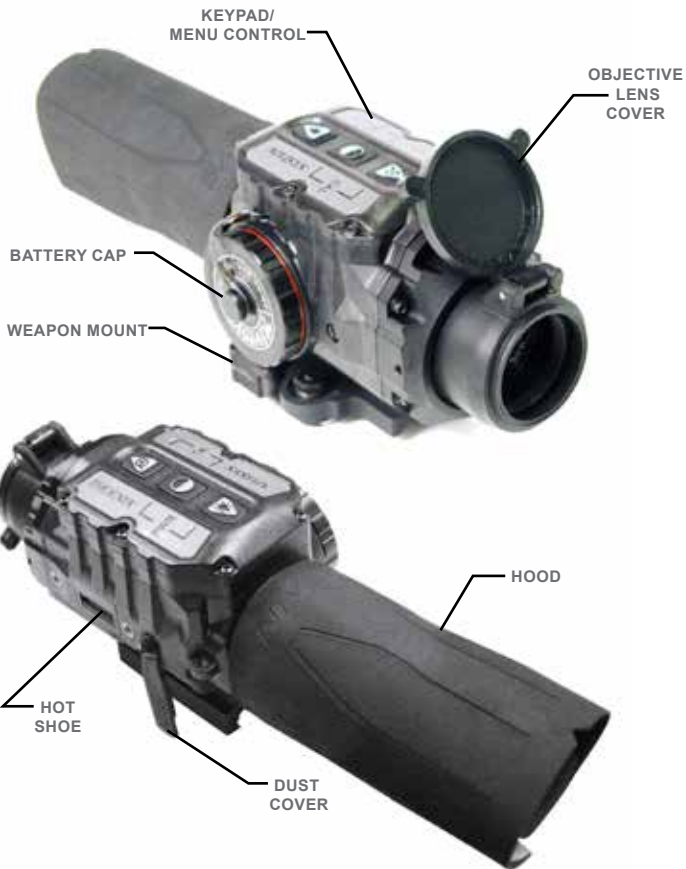


ACCU-ZOOM PROCEDURE

1. Place the UTAC ahead of the day sight on the Picatinny (1913) Rail.
2. Ensure the UTAC is in 1X digital zoom mode with the lens cap closed.
3. Looking through the day sight, select AZ from the RETICLE menu so the dot reticle appears.
4. Select the ADJUST menu so the horizontal and vertical axes are showing.
5. Align the dot reticle horizontally (H) and vertically (V) with the center of the day sight reticle by using front and rear buttons.
6. Select EXIT.
7. The UTAC is aligned to the day optic for both 1X and digital zoom imaging. **NOTE:** The dot reticle may be turned off if desired. Select OFF from the RETICLE menu.



UTAC SERIES QUICK REFERENCE GUIDE



UTAC SERIES QUICK REFERENCE GUIDE

CAUTION

THE THERMAL FOCAL-PLANE ARRAY OF THE UTAC IS SENSITIVE TO EXPOSURE TO EXTREMELY HIGH LEVELS OF RADIANT FLUX. NEVER EXPOSE THE UTAC EITHER POWERED OR UN-POWERED, DIRECTLY TO THE SUN OR ANY OTHER SOURCE OF RADIANT FLUX THAT THE HUMAN EYE CANNOT TOLERATE.



BATTERY INSTALLATION

Remove the battery cap and insert two CR123 batteries into the battery compartment with the positive (+) terminals facing out. Hold the Display button down for 3 seconds to check the battery life of the unit.



POWERING ON/OFF THE UTAC

To power ON the UTAC, simultaneously press and hold the Center and Rear buttons for 3 seconds. To power OFF the UTAC, simultaneously press the same buttons.



THERMAL CALIBRATION

Simultaneously press the Front and Center buttons while the lens cover is closed.

UTAC WEAPON MOUNTING

Position the UTAC in front of the day scope. Use the coupling hood to eliminate stray light between the two sights.

