



MOUNTING UTAC ON WEAPON AS A CLIP-ON

1. Fold the coupling hood forward to reveal the end of the collimating lens on the UTAC.
2. With mount throw lever rotated outwards, place the UTAC on the MIL-STD-1913 mounting rail in front of the day scope. The UTAC should be positioned as close to the day scope as possible without touching.
3. Check that the mount recoil stop falls into a recoil groove on the mounting rail and that the UTAC is fitted squarely on the MIL-STD -1913 mounting rail.
4. Secure the UTAC by rotating the throw lever locking tab inwards to clamp the UTAC mount onto the mounting rail.
5. Slide the locking tab forward to secure the mount lever.
6. Unfold the coupling hood over the day scope and ensure it is not obstructing the view through the day scope to the UTAC. Refer to photo on opposite page for visual of completed clip-on installation.



REMOTE SWITCH INSTALLATION

1. Lift and turn the hot shoe dust cover of the thermal device so that it is out of the way of the connector.
2. Align the mating connectors and thumb screw.
3. Screw the thumb screw into the thermal device about one (1) full turn so that the threading is engaged.
4. Push the remote switch connector into the thermal device.
5. Turn the thumb screw until a stop is reached or finger tight. It may be necessary to push in the remote switch connector once more during this step.
6. Using the supplied hook and loop tape, fasten the keypad to a location on the weapon that will be comfortable for use with the non-trigger hand.
7. Cut off any excess hook and loop tape.
8. Remove any slack in the cord to prevent snag hazards by wrapping any loose cord around the weapon before securing the keypad to its final location.

CAUTION:

THE THERMAL FOCAL PLANE ARRAY UTILIZED WITHIN THE UTAC IS SENSITIVE TO EXPOSURE TO EXTREMELY HIGH LEVELS OF RADIANT FLUX. NEVER EXPOSE THE UTAC, EITHER POWERED OR UN-POWERED, DIRECTLY TO THE SUN OR ANY OTHER SOURCE OF RADIANT FLUX THAT THE HUMAN EYE CANNOT TOLERATE.



(UTAC-64M SHOWN)

UNIVERSAL THERMAL ACQUISITION CLIP-ON

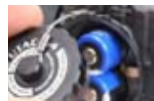
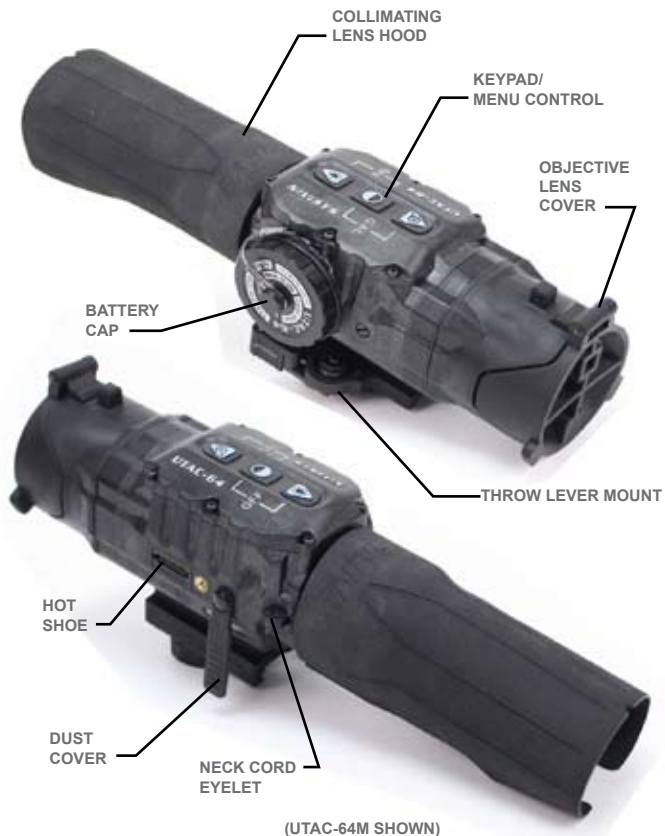
- UTAC-32M™ (320 X 240, 35MM LENS)
- UTAC-32L™ (320 X 240, 60MM LENS)
- UTAC-64M™ (640 X 480, 35MM LENS)
- UTAC-64L™ (640 X 480, 60MM LENS)



(UTAC-64L SHOWN)

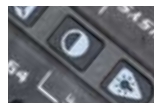
UTAC™ Series QUICK REFERENCE GUIDE

UTAC™ Series QUICK REFERENCE GUIDE



BATTERY INSTALLATION

Remove the battery cap. Insert two CR123 batteries into the battery compartment with the positive (+) terminals facing out. Replace the battery cap and tighten until the orange o-ring is no longer visible.



POWERING ON/OFF THE UTAC

To power ON the UTAC press any of the three keypad buttons. To power OFF the TAWS, simultaneously press the Polarity (Menu Select) and Display Brightness (Scroll Down) buttons on the keypad.



THERMAL CALIBRATION

To calibrate the system, simultaneously press the Digital Zoom (Scroll Up) and Polarity (Menu Select) buttons while the lens cover is closed. Perform a calibration 30 seconds after initial activation and upon every substantial environmental temperature change.



RANGE FOCUS ADJUSTMENT (UTAC-64L, -32L ONLY)

The range focus ring is used to focus the objective lens for objects viewed at varied distances. Rotate the range focus ring counter-clockwise for distant objects up to infinity. Rotate the range focus ring clockwise for close objects up to 2 meters.



DIGITAL ZOOM (SCROLL UP) BUTTON

The Zoom (Scroll Up) button electronically magnifies the output 2X as the button is depressed. When in the Menu Mode this button scrolls the cursor up.



POLARITY CHANGE (MENU SELECT) BUTTON

The UTAC can display hot temperatures as black or hot temperatures as white. The Polarity (Menu Select) button toggles between the two. Press and hold this button to activate the Menu Mode. When in Menu Mode this button selects the item that the cursor is resting on.



DISPLAY BRIGHTNESS (SCROLL DOWN) BUTTON

Each press of the Display Brightness (Scroll Down) button will increase the level of brightness and the corresponding brightness levels (1-12) will appear on the display. When in Menu Mode this button scrolls the cursor down.